



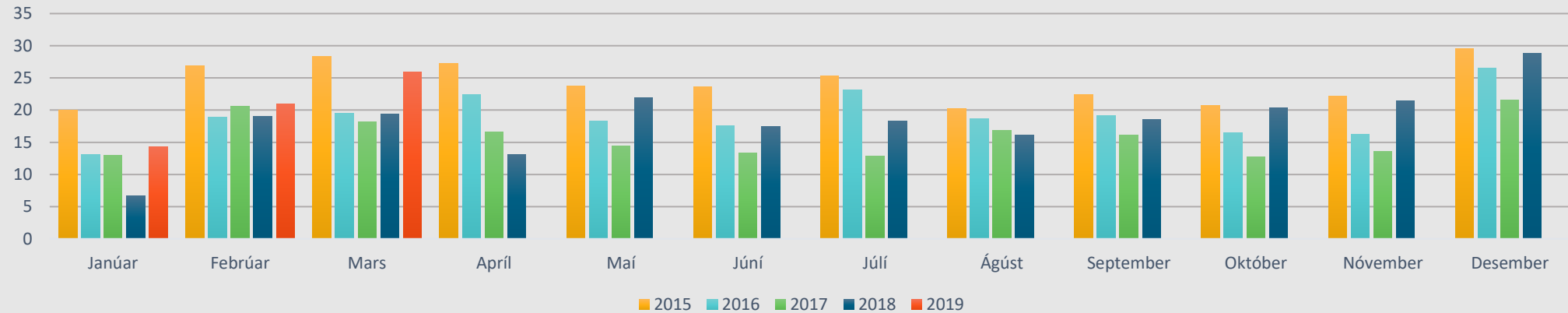
HAFNARFJARÐARBÆR

Fjölskylduþjónusta Hafnarfjarðar Helstu lykiltölur

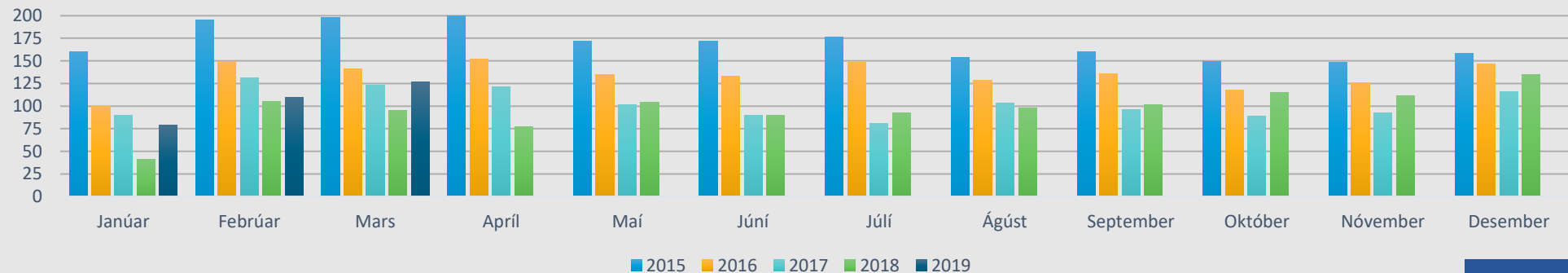
Janúar - Mars 2019

Fjárhagsaðstoð

Fjárhagsaðstoð í þús.kr.

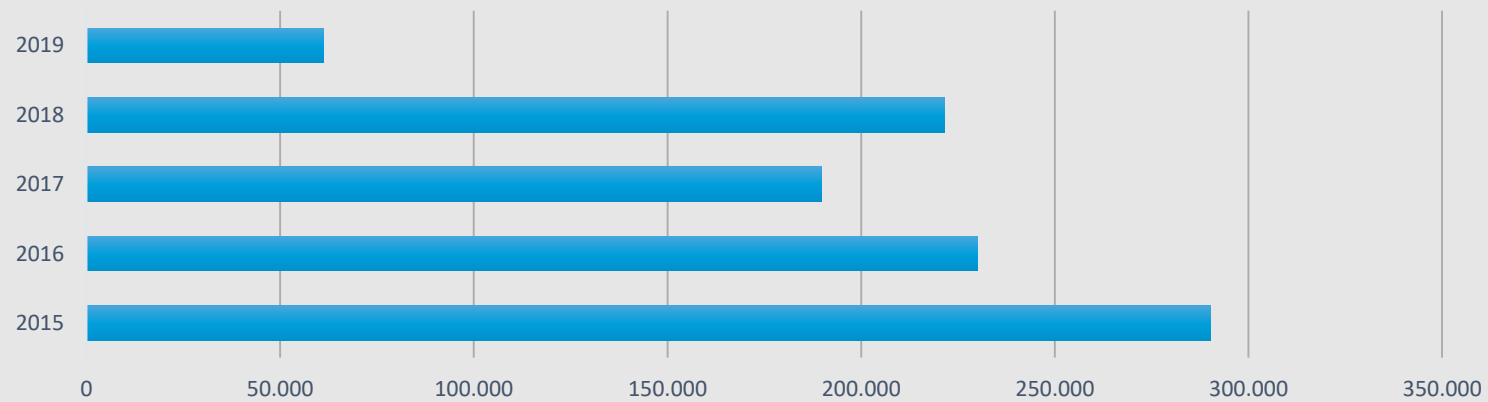


Fjöldi einstaklinga



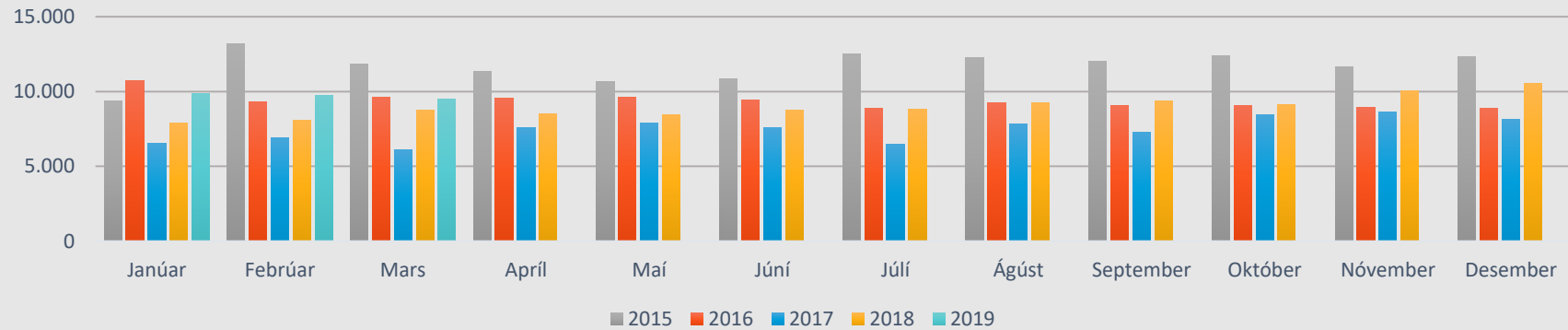
Fjárhagsaðstoð frh.

Fjárhagsaðstoð (rauntölur í þús.kr.)

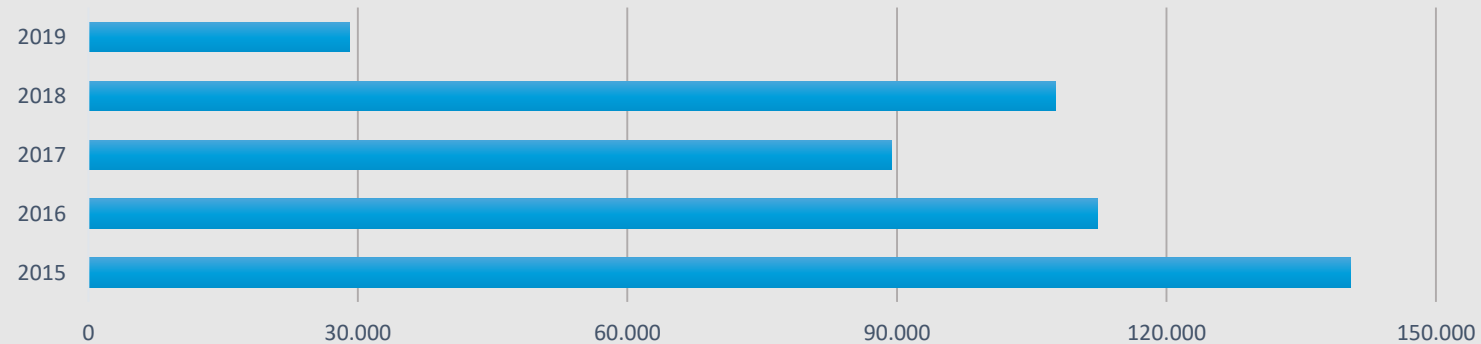


Fjárhagsaðstoð frh.

Sérstakar húsaleigubætur (þús.kr.)

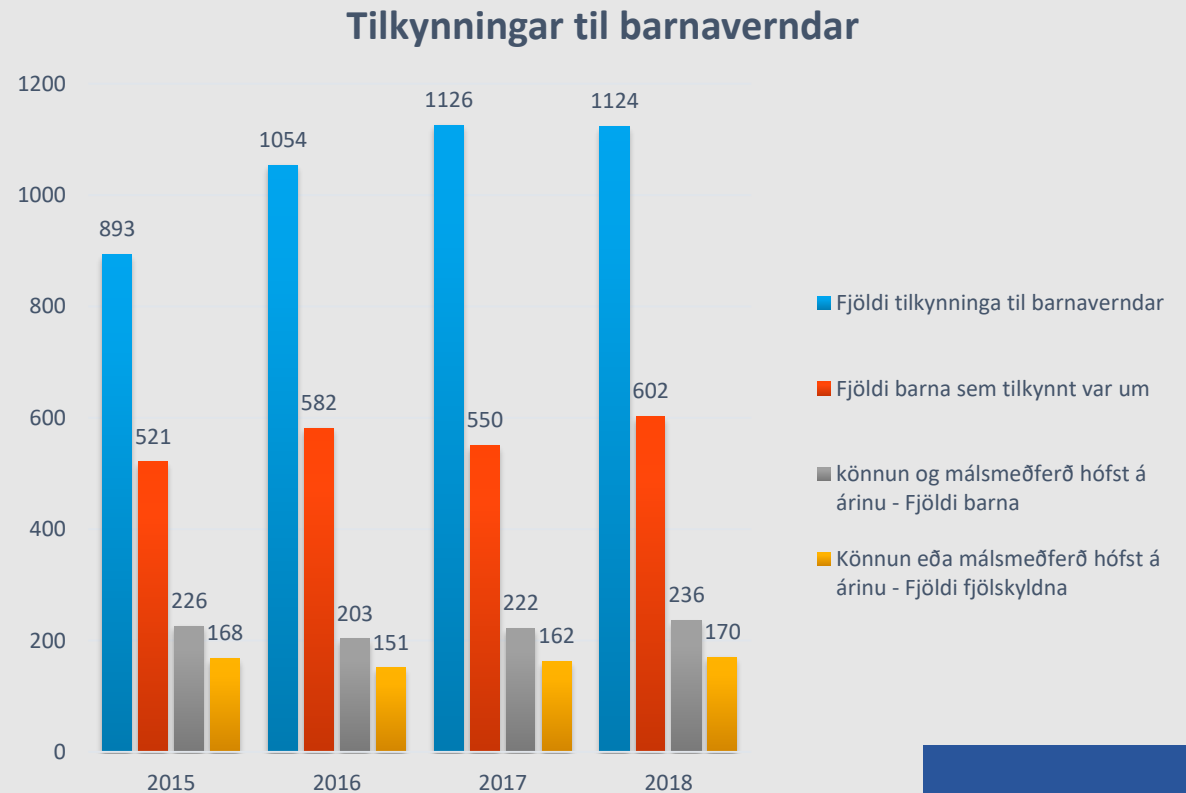


Sérstakar húsaleigubætur (rauntölur í þús.kr.)



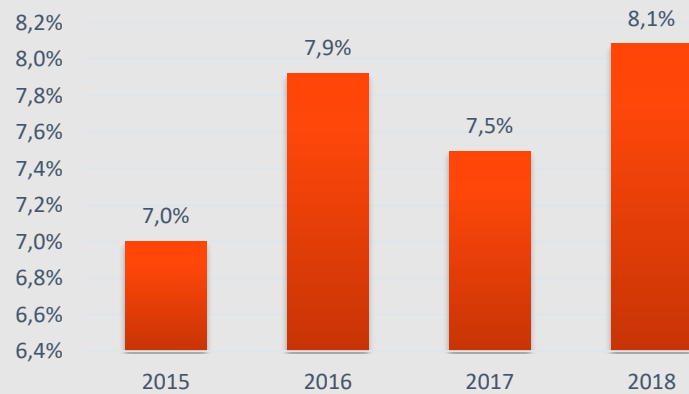
Barnavernd

- Frá janúar til mars hafa borist 285 tilkynningar til barnaverndar
- Í lok mars eru:
 - 223 opin mál – Meðferðaráætlun í gangi
 - Af þessum málum eru :
 - 21 mál vegna hælisleitenda eða flóttamanna
 - 2 fylgdarlaus ungmenni
 - 105 mál í könnun

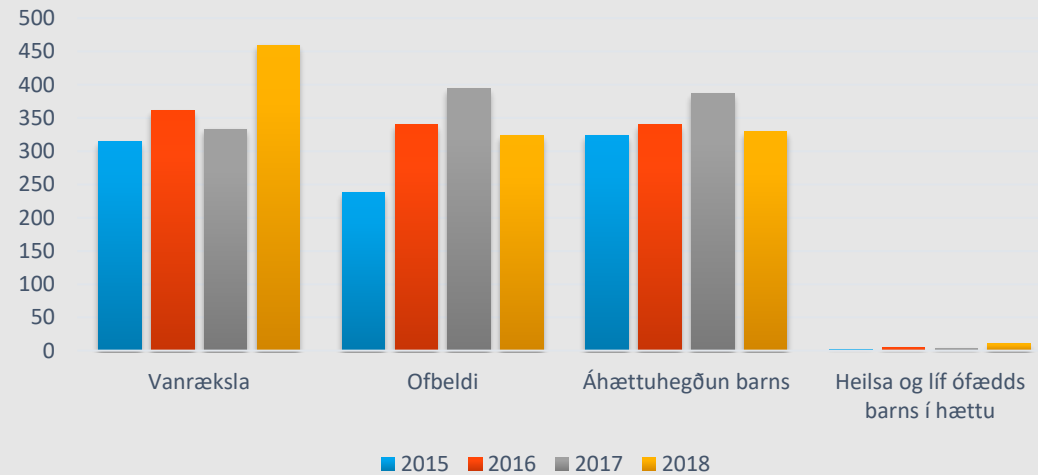


Barnavernd frh.

Hlutfall barna í Hafnarfirði sem tilkynnt er um til barnaverndar

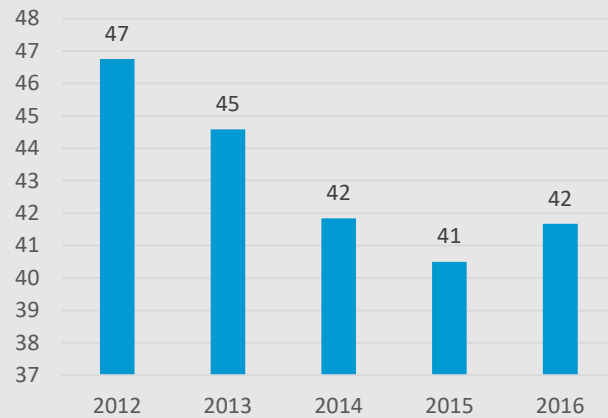


Ástæður tilkynninga

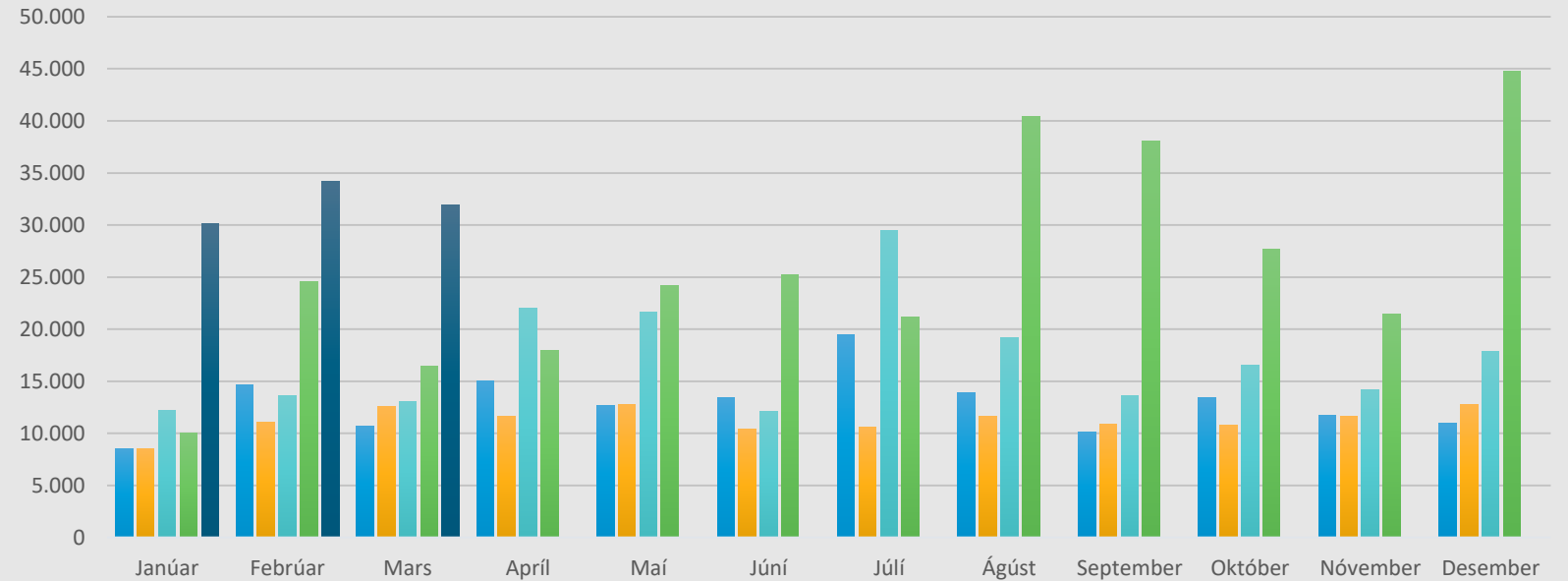


Barnavernd – greiðslur fyrir vistun barna

Meðalfjöldi einstaklinga á mánuði

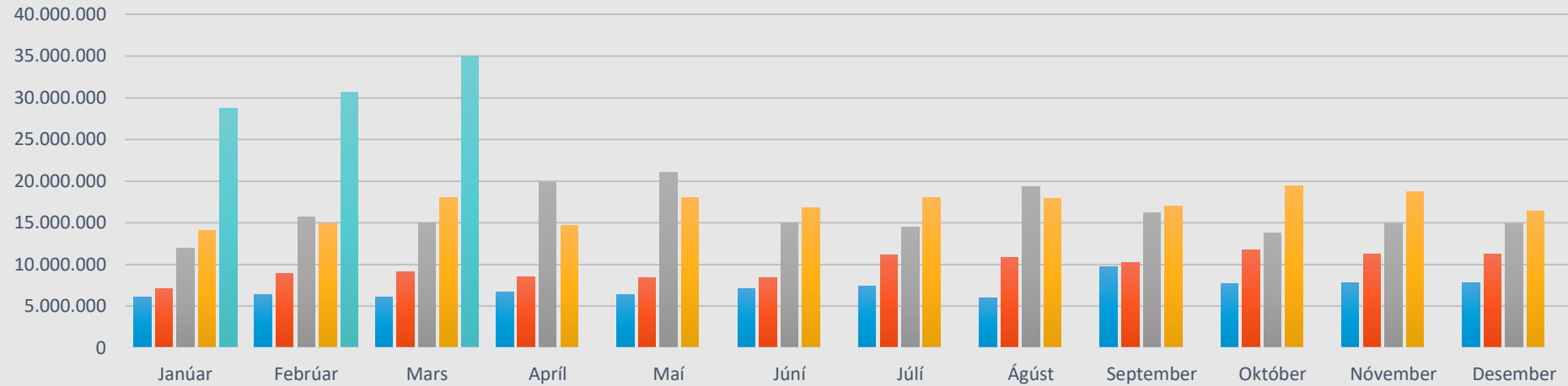


Vistgreiðslur í þús.kr.

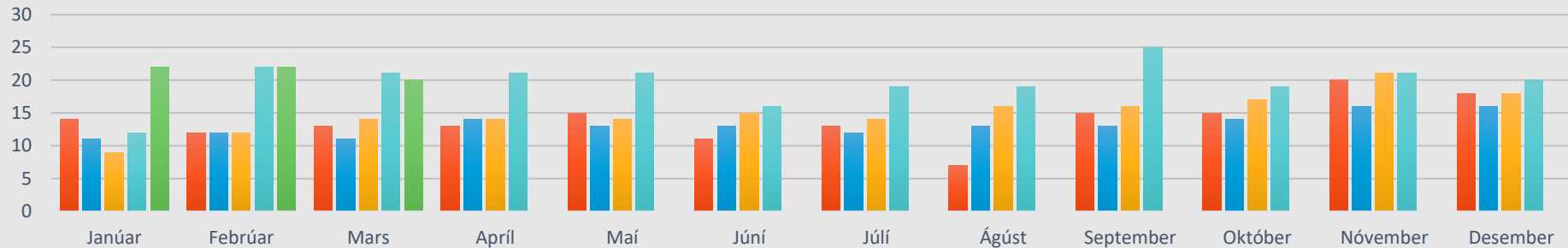


Málefni fatlaðra

MFF NPA og beingreiðslusamningar í þús.kr.

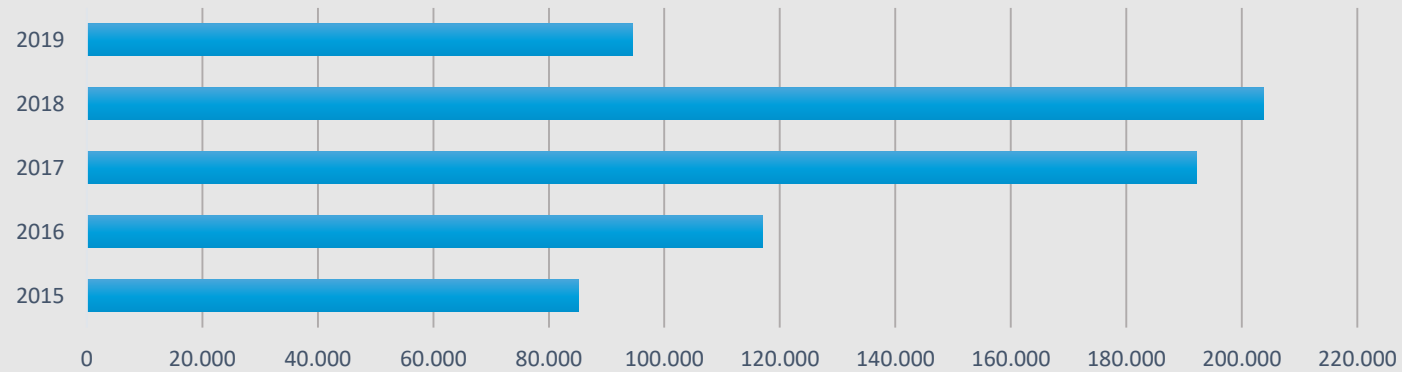


fjöldi einstaklinga



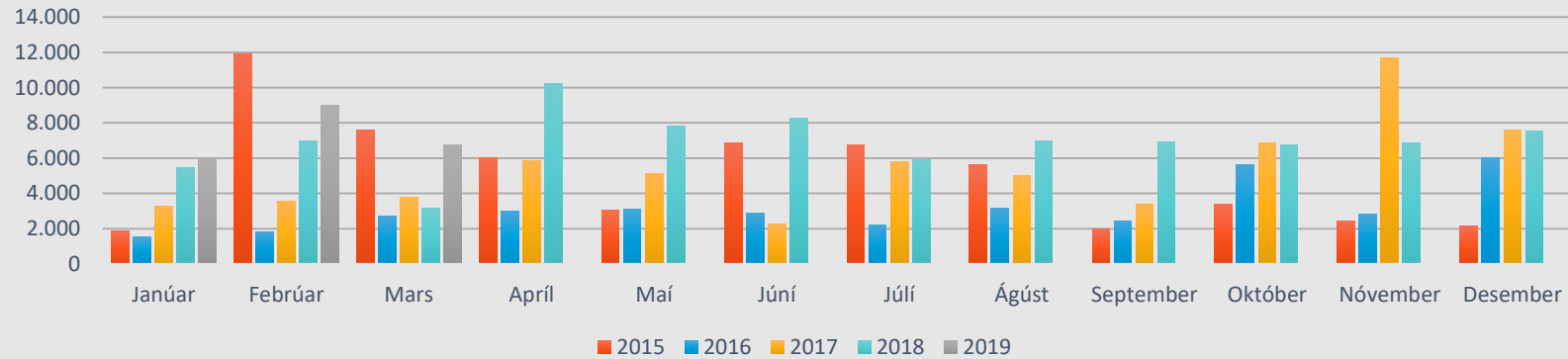
Málefni fatlaðra

MFF NPA samningar (rauntölur í þús.kr)

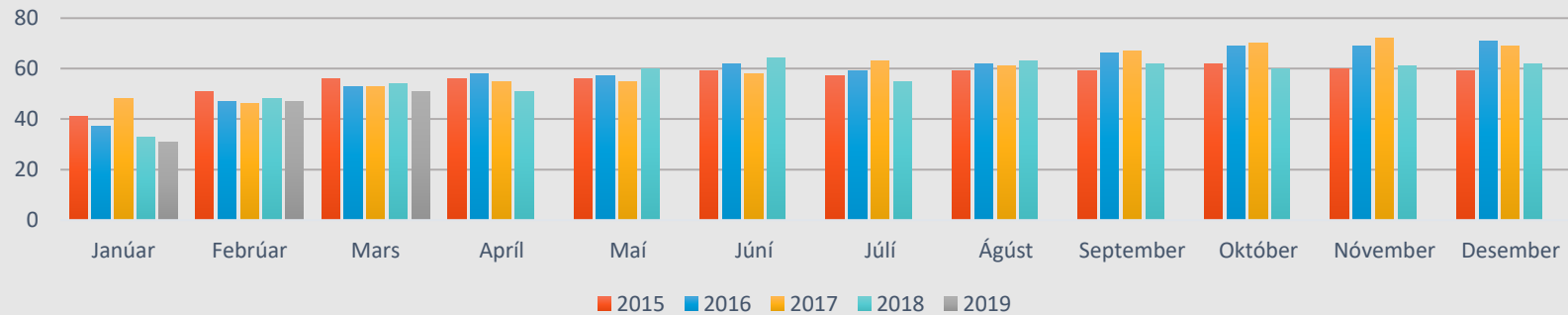


Málefni fatlaðra - Stuðningur

Kostnaður vegna stuðningsfjölskyldna (þús.kr.)

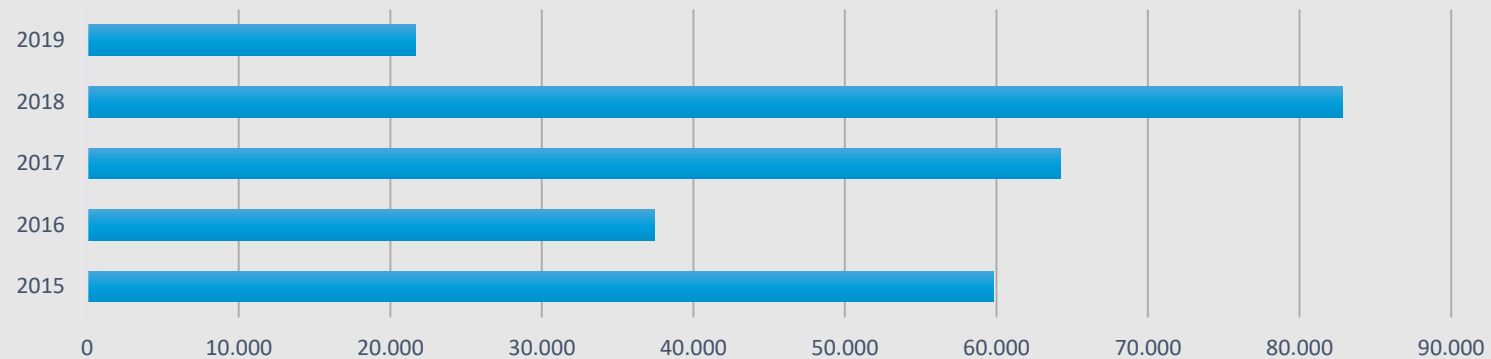


Fjöldi einstaklinga í stuðningi



Málefni fatlaðra – stuðningsfjölskyldur frh.

MFF Stuðningsfjölskyldur (rauntölur í þús.kr.)



Málefni fatlaðra - ferðapjónusta

